



# CEMHER®

- ORIGIN -

MICROCEMENT

---

STATE OF THE ART COATINGS



# #INDEX

13  
MICRODUO

17  
MICRODUR

23  
MICROLEVEL

27  
MICROPOOL

31  
MICRONE

35  
MICRORÖCK

39  
MICROFLEX

43  
TONERS

49  
PRIMERS

53  
VAPOR BARRIER

57  
PORE SEALERS

61  
POLYURETHANES

67  
RETAIL DESING

75  
METALLICS AND OXIDES

85  
SELF-LEVELING COATING

91  
EPOXY

95  
MAINTENANCE

"Architecture is not four walls and a roof, it is the space and the spirit generated within."

Lao Tzu.

What does a place need to have spirit?

When a space begins to be created it is dead, empty and lifeless. It needs something to become a space with soul, a space that stands out from the rest; a space that makes one feel.

A decorative coating, such as microcement, has the same meaning for a space as the foundations do for a building: the beginning! The beginning of a space that expresses, welcomes, excites, that has life.

Cemher is exactly this, it is THE ORIGIN.

It is the origin of idyllic places, yet to be created.

The whole universe comprises the brand is the perfect synergy to start creating spaces.

**And Cemher is your ally.**



# C



Manufacturing since 1940

# ONE OF THE MOST ESTABLISHED COMPANIES IN THE COUNTRY



**Transcending is our goal. To go beyond. That is what we seek with the creation of Cemher.**

Our experience (backed by the Kilnher Group) allows us to relaunch microcement from another dimension.

Until now, microcement has been a decorative coating plagued by technical problems and doubts about its application. It acquired a bad reputation caused by lack of knowledge and poor technical advice from some inexperienced companies.

With the arrival of Cemher, a microcement of superior quality resurfaces and with it, a technical support that provides the necessary solutions to possible unforeseen events. We have made an effort to solve all the technical problems that have arisen in the past and that have overshadowed this appreciated coating.

CEMHER is a reality thanks to our experience in the chemical sector and the experience gained over the years as manufacturers and suppliers for other microcement companies that commercialize it under their own brand. We consider this one of our added values, since our experience is superior to that of other companies in the sector.

This background and trajectory allow us to launch innovative products to the market that our competitors cannot offer. Improvement and innovative spirit are two of the components of our essence that best define us.

From here, our brand claim was born:

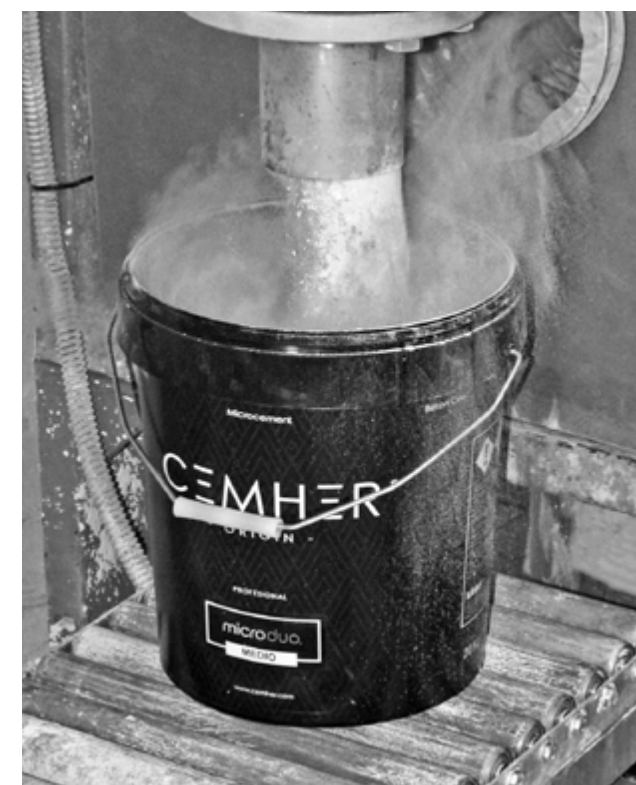
## “Origin”

Origen: from lat. origo, -inis.

Principle, birth, source, root and cause of something.

Cemher is just that, the beginning. The origin of microcement manufacturers. In turn, microcement is the origin of a space that has yet to be created. All it takes is four empty walls and the microcement will transform that inert place into a space with soul.

Microcement is also the origin of your project. Bet on it and transcend its dimension.



From Cemher, as expert manufacturers of microcement, we advise professionals and private customers who are interested in this material, to be informed and be aware of the quality of the material to be purchased. A timely choice of the manufacturer is essential to achieve the expected final result.



# THE PERFECT UNION OF TECHNIQUE AND AESTHETICS

Its finishes are elegant and minimalist, creating (depending on the microcement chosen) very decorative marbling effects, capable of embellishing any space. In addition, microcement is a good companion to other materials such as wood; when combined to decorate walls or floors, they make any room very special.

# ABSOLUTE ADAPTABILITY

The flexibility and minimal thickness allow microcement to adapt to any type of surface: rough or smooth, horizontal or vertical. No preparation work is necessary, as microcement can be applied directly on to existing materials.



# INFINITE ELEGANCE

Why do we say infinite? Unlike other materials, microcement does not need expansion joints, so the result is a continuous and unlimited pavement or coating.

# NO LIMITS

Colors, textures, shapes, and different effects. Microcement has no limits when it comes to creating customized spaces.

Microcement is a decorative coating composed of a cementitious base mixed with polymers, fibers, resins, aerators, ultrafine aggregates and mineral pigments; it does not require expansion joints and has a thickness of 1 to 3 mm. This material is ideal for covering walls and floors without the need to remove the existing material.

- Ideal for modern and minimalist environments.
- Applicable on all types of surfaces: walls, floors, furniture, swimming pools.
- Continuous flooring (no joints required).
- Diversity of colors.
- Different finishes and textures.
- High resistance.
- Easy maintenance.

Microcement features:



Elasticity and flexibility



Fits any shape or geometry



Durable and robust



Adherence on all types of substrate



Continuous Joint-free



Fire-retardant



UV-resistant



Stain-resistant



Excellent chemical and mechanical resistance

Suitable for:



Furniture



Radiant floor heating



Indoors  
Outdoors

Adapting to each of the needs of the space in question is a priority for our brand; for this reason we distinguish 7 lines of microcement:

microduo

## THE TRADITION

The reflection of the union between tradition and innovation: that is Microduo. A new and innovative coating with which Cemher was born to transform the paradigm of decoration and minimalist architecture. After this launch, other variants of microcement with very specific characteristics emerged.

microdur

## THE TRUST

The same confidence that allows you to forget about constant caution at home and distract yourself from small everyday mishaps. All this is possible thanks to the high resistance of the Microdur line for floors and walls.

microlevel

## THE SAFETY

The risk appears with the likelihood of the problem turning into a disaster. With Microlevel, thanks to its tendency to self-levelling, you can be sure that the result on horizontal surfaces will meet expectations.

micropool

## THE ADAPTATION

Due to its high variability and capacity to adapt to any substrate, microcement can be used for a wide variety of applications. Micropool adapts perfectly to the conditions of the aquatic environment, while maintaining the main qualities of microcement.

microone

## THE SIMPLICITY

Often we want to avoid complex solutions in favor of simplicity. This sophisticated art of simplicity is hidden in Microne, a ready-to-use microcement. All you have to do is open it and apply it. Excellent for application in wet areas.

microröck

## THE STRENGTH

Strength is defined by its ability to withstand any kind of impact. Whether it's high traffic areas or knives falling on the kitchen floor, the Microröck line proves to be highly resistant to all kinds of external stresses on a daily basis.

microflex

## THE FLEXIBILITY

By flexibility we understand the willingness to bend easily. Without going any further, this is the great peculiarity of our microcement. That arises, given the need to be able to have a material that adapts easily without the structural movement of a surface or the appearance of cracks deteriorate it.





# microduo®

## - THE TRADITION -

### DUAL-COMPONENT MICROCEMENT

The Microduo line of microcement is characterized by the use of two components for hardening. The microcement powder must be mixed with the Resincem product, in the appropriate proportion, to provide the hardness and the ideal adherence to the system.

It stands out for its easy application and maneuverability with a trowel because its hardening time is very long.

### MICRODUO'S CHARACTERISTICS



More than 3 h of product's pot life



High stucco effect

30 MPa

Compressive strength

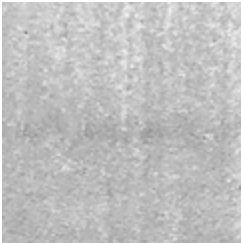
2 Components

Resin + Powder

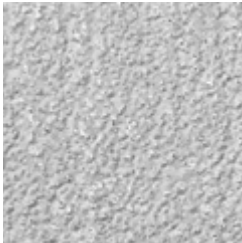
### GRANULOMETRIES



Fine



Medium



Base



## microduo® FINE

14 Microcement of fine texture finish. After adding the toner of the chosen color you will obtain a smooth decorative surface with stucco effect. It is recommended only for vertical and non-trafficable surfaces, since it does not have non-slip properties.

Classified as CT-C30-F9 according to the UNE-EN 13813 standard.

Consumption: 0,5 Kg/m<sup>2</sup>

Proportion: 10 Kg of Microdur Fine + 5 L of Resincem

Volume: 10 Kg

Suitable for:



Vertical  
surfaces

Properties:



UNE EN 13813  
CT-C40-F9



## microduo® MEDIUM

Microduo Medium has thicker granulometry than Microduo Fine, which makes its finish more subtle (less stucco effect). After adding the toner of the chosen color, the result will be a slightly textured surface, much more resistant and of superior hardness. The grain size provides it with anti-slip properties. It can be applied on a multitude of surfaces, however, its most recommended use is on medium traffic pavements. It can also be applied on Vertical surfaces or walls.

Classified as CT-C40-F10 according to the UNE-EN 13813 standard.

Consumption: 0,6 Kg/m<sup>2</sup>

Proportion: 20 Kg of Microduo Medium + 8L of Resincem

Volume: 20 Kg

Suitable for:



Vertical  
surfaces



Floors



UNE EN 13813  
CT-C40-F10



Antislip



## microduo® BASE

Microcement that is used as a previous step to Microduo Fine or Microduo Medium. However, it can also be applied as a single step so that the same base acts as the finishing layer. The result will be a much rougher surface, without any stucco effect and with a high anti-slip power. By adding the toner of the chosen color you will obtain a decorative finish, with a high planimetry that allows the product to match very well on horizontal surfaces. It is recommended for pavements and extreme traffic floors. It can also be applied on Vertical surfaces or walls.

Classified as CT-C40-F10 according to the UNE-EN 13813 standard.

Consumption: 1 Kg/m<sup>2</sup>

Proportion: 20 Kg of Microdur Base + 5 L of Resincem

Volume: 20 Kg

Suitable for:



Vertical  
surfaces



Floors



UNE EN 13813  
CT-C40-F10



Antislip



## RESINCEM

15 Resincem is a special resin for two-component microcement systems (Microduo). Mixed in the right proportion, it provides excellent compatibility, hardness and adhesion to microcement systems and mortars.

Volume: 5 L, 8 L, 10 L and 25 L



# microdur®

## - THE TRUST -

### SINGLE-COMPONENT MICROCEMENT

The Microdur line of microcement is characterized by being a single-component coating. It only needs to be mixed with water for hardening. The main difference with respect to those that are combined with resin (Microduo) is that its hardening time is not as long. However, mixing with water and not with resin makes it simpler to apply.

Microdur allows you to achieve a very high thicknesses without the risk of cracking, thanks to its high hardening. With a large amount of product, it is possible to get different textures and even cast shapes and forms with molds.

16 This line is also characterized by being the only one that allows textured coatings, such as, for example, the famous concrete formwork effect.

### MICRODUR'S CHARACTERISTICS



2 h of product's pot life



Stucco effect

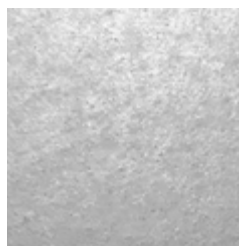
40 MPa

Compressive strength

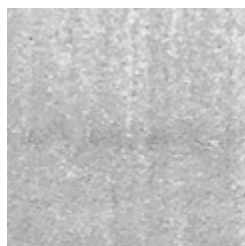
1 Component

Water + Powder

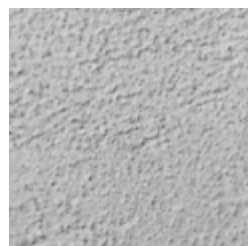
### GRANULOMETRIES



Fine



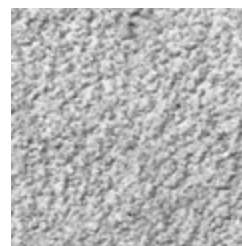
Medium



Fine Base



Base



Thick Base



17



## microdur. FINE

18 Microcement of fine texture finish. After adding the toner of the chosen color you will obtain a smooth decorative surface with stucco effect. It is recommended only for vertical and non-trafficable surfaces, since it does not have non-slip properties.

Classified as CT-C30-F9 according to the UNE-EN 13813 standard.

Consumption: 0,5 Kg/m<sup>2</sup>

Proportion: 10 Kg of Microdur Fine + 4 L of water

Volume: 10 Kg

Suitable for:



Vertical surfaces

Properties:



UNE EN 13813 CT-C40-F9



## microdur. REGULAR

Microcement with an intermediate finish, between Fine and Medium. It achieves a more subtle finish (less stucco effect than Fine). After adding the toner of the chosen color, the result will be a slightly textured surface, much more resistant and of superior hardness. The grain size provides it with anti-slip properties. It can be applied on a multitude of surfaces, however, its most recommended use is on medium traffic pavements. It can also be applied on Vertical surfaces or walls.

Classified as CT-C40-F10 according to the UNE-EN 13813 standard.

Consumption: 0,6 Kg/m<sup>2</sup>

Proportion: 10 Kg of Microdur Regular + 4 L of water.

Volume: 10 Kg

Suitable for:



Vertical surfaces



Floors

Properties:



UNE EN 13813 CT-C40-F10



## microdur. MEDIUM

Microdur Medium has thicker granulometry than Microdur Regular, which makes its finish more rustic. After adding the toner of the chosen color, the result will be a slightly textured surface, much more resistant and of superior hardness. The grain size provides it with anti-slip properties. It can be applied on a multitude of surfaces, however, its most recommended use is on medium traffic pavements. It can also be applied on Vertical surfaces or walls.

Classified as CT-C40-F10 according to the UNE-EN 13813 standard.

Consumption: 0,6 Kg/m<sup>2</sup>

Proportion: 20 Kg of Microdur Medium + 6,5 L of water

Volume: 20 Kg

Suitable for:



Vertical surfaces



Floors

Properties:



UNE EN 13813 CT-C40-F10



Antislip



## microdur. FINE BASE

19 Low roughness microcement. After adding the toner of the chosen color you will get a decorative finish with a very good planimetry on horizontal surfaces. It stands out for having a greater anti-slip power and for being more resistant and harder than the Medium and Fine. It is recommended for pavements and high traffic floors. It can also be applied on Vertical surfaces or walls. It can also be used as a base when a base of smaller granulometry is desired.

Classified as CT-C40-F10 according to the UNE-EN 13813 standard.

Consumption: 1 Kg/m<sup>2</sup>

Proportion: 20 Kg of Microdur Fine Base + 6 L of water

Volume: 20 Kg

Suitable for:



Vertical surfaces



Floors

Properties:



UNE EN 13813 CT-C40-F10



Antislip



## microdur<sup>®</sup> BASE

Microcement with a roughness, strength and hardness superior to Fine Base. Without Stucco effect. It stands out for its high anti-slip power. After adding the toner of the chosen color we will obtain a rough decorative finish, with a high planimetry that will allow the product to match very well on horizontal surfaces. It is recommended for horizontal surfaces and extreme traffic floors. It can also be applied on Vertical surfaces or walls. It can be used when a base of intermediate granulometry is desired, between Microdur Thick Base and Microdur Fine Base.

Classified as CT-C40-F10 according to the UNE-EN 13813 standard.

Consumption: 1 Kg/m<sup>2</sup>

Proportion: 20 Kg of Microdur Base + 5 L of water

Volume: 20 Kg

Suitable for:



Vertical surfaces



Floors

Properties:



UNE EN 13813  
CT-C40-F10



Antislip



## microdur<sup>®</sup> THICK BASE

Single-component microcement that is used as a previous step for the preparation of microcements Fine, Medium, Fine Base or Base. The regularization of the aggregate is very good due to its size, which allows to obtain a perfect planimetry with a high covering power. It has a very high compression hardness. In case of opting for the application of Microdur Fine it is convenient to apply one or two coats of Microdur Medium previously to fill the Thick Base. In this way you will need fewer coats of Microdur Fine, which helps to achieve higher compression hardness.

Classified as CT-C40-F10 according to the UNE-EN 13813 standard.

Consumption: 1,5 Kg/m<sup>2</sup>

Proportion: 20 Kg of Microdur Thick Base + 5 L of water

Volume: 20 Kg

Suitable for:



Vertical surfaces



Floors

Properties:



UNE EN 13813  
CT-C40-F10



Antislip





# microlevel®

## - THE SAFETY -

### SINGLE-COMPONENT MICROCEMENT

The Microlevel line of microcement is characterized by being a coating with a tendency to level, without being a self-leveling. This quality allows the beading produced by the trowel, in its application, to be fainter. The stucco effect, characteristic of microcement, is concealed, producing a noticeably smoother finish. This material is mixed with water and therefore we speak of its great simplicity of use.

### MICROLEVEL'S CHARACTERISTICS



1 h of product's  
pot life



Stucco effect



Leveling tendency

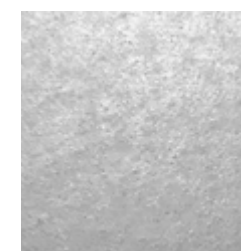
**48** MPa

Compressive  
strength

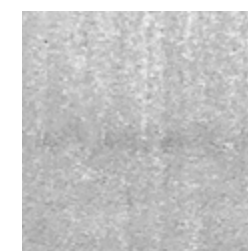
**1** Component

Water + Powder

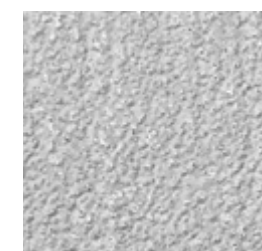
### GRANULOMETRIES



Fine



Medium



Base



## microlevel® FINE

24

Microcement of fine texture finish. After adding the toner of the chosen color you will obtain a smooth decorative surface with stucco effect. It is recommended for Vertical surfaces, since it does not have non-slip properties. However, it could also be applied on horizontal surfaces.

Classified as CT-C30-F9 according to the UNE-EN 13813 standard.

Consumption: 0,5 Kg/m<sup>2</sup>

Proportion: 10 Kg of Microlevel Fine + 3,5 L of water

Volume: 10 Kg

Suitable for:



Vertical surfaces

Properties:



UNE EN 13813  
CT-C40-F9



## microlevel® MEDIUM

Microlevel Medium has thicker granulometry than Microlevel Fine, which makes its finish more subtle (less stucco effect). After adding the toner of the chosen color, the result will be a slightly textured surface, much more resistant and of superior hardness. The grain size provides it with anti-slip properties. It can be applied on a multitude of surfaces, however, its most recommended use is on medium traffic pavements. It is recommended for horizontal surfaces only.

Classified as CT-C40-F10 according to the UNE-EN 13813 standard.

Consumption: 0,6 Kg/m<sup>2</sup>

Proportion: 20 Kg of Microlevel Medium + 4,5 L of water.

Volume: 20 Kg

Suitable for:



Vertical surfaces

Properties:



UNE EN 13813  
CT-C40-F10



Antislip



## microlevel® BASE

Microcement that is used as a previous step to Microlevel Fine or Microlevel Medium. However, it can also be applied as a single step so that the same base acts as the finishing layer. The result will be a much rougher surface, without any stucco effect and with a high anti-slip power. By adding the toner of the chosen color you will obtain a decorative finish, with a high planimetry that allows the product to match very well on horizontal surfaces. It is recommended for pavements and extreme traffic floors.

Classified as CT-C40-F10 according to the UNE-EN 13813 standard.

Consumption: 1 Kg/m<sup>2</sup>

Proportion: 20 Kg of Microlevel Base + 4 L of water

Volume: 20 Kg

Suitable for:



Vertical surfaces

Properties:



UNE EN 13813  
CT-C40-F10



Antislip

25

# micropool®

## - THE ADAPTATION -

### DUAL-COMPONENT MICROCEMENT

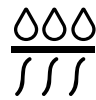
The Micropool line of microcement is a two-component coating that only needs to be mixed with a catalyst for hardening.

It is specially designed for applications on surfaces immersed in water such as swimming pools. Specifically formulated to create a certain permeability to water vapor to avoid blistering due to lack of permeability.

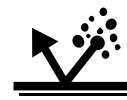
### MICROPOOL'S CHARACTERISTICS



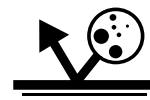
Waterproof



Durability to water

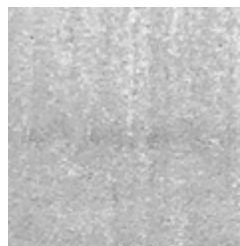


Resistance to chlorine  
and salt water



Does not produce  
blisters

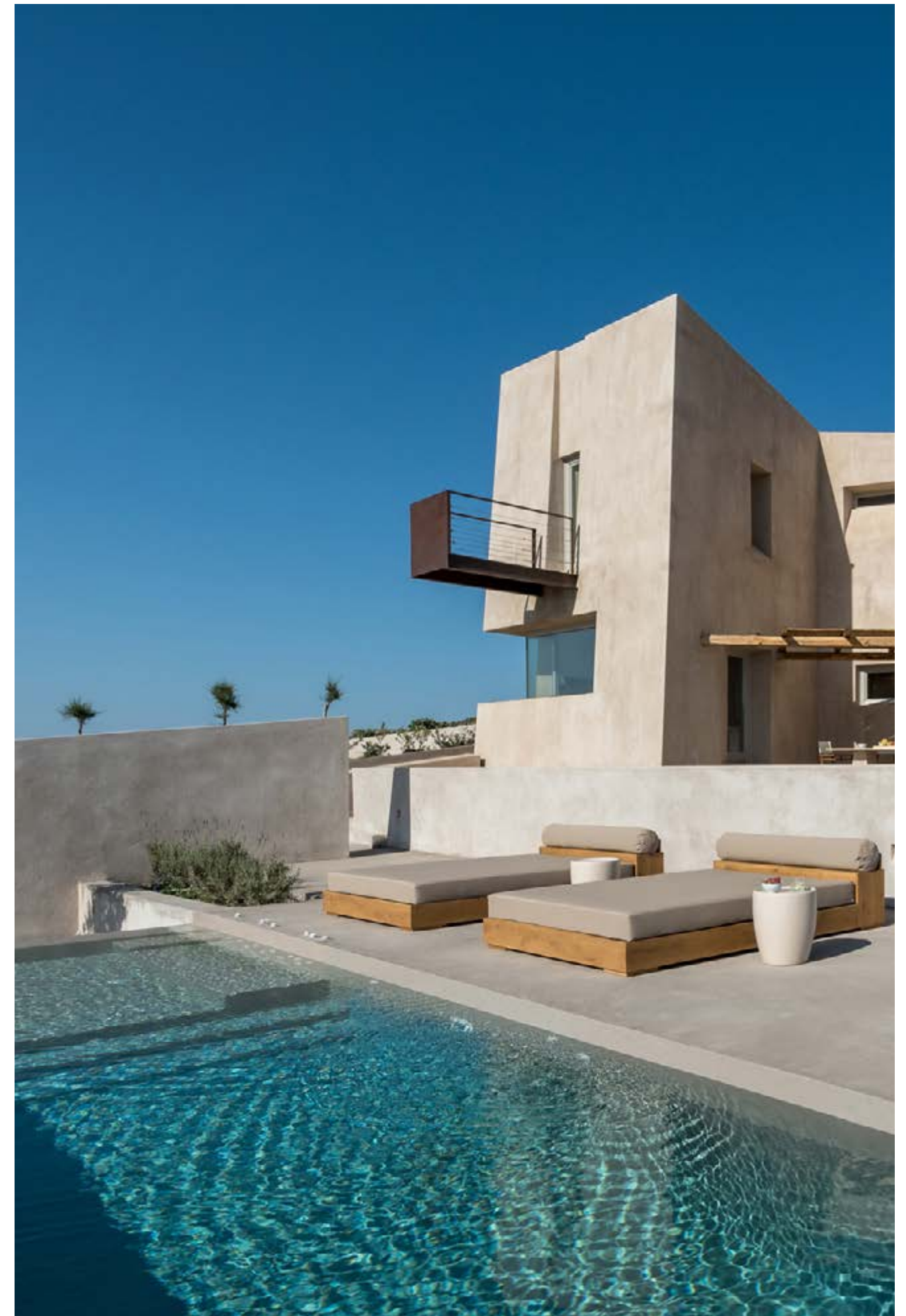
### GRANULOMETRIES



Finisher



Base







# micropool® FINISHER

28 Micropool finish has a medium grain size and is a two-component coating that is only need to bemixed with a catalyst. It is especially indicated for applications on surfaces immersed in water, such as swimming pools or ponds. It is recommended to apply two coats of Micropool Finisher over Micropool Base.

Classified according to UNE-EN 13813 as CT-C40-F10.

Consumption: 0,6 Kg/m²

Proportion: 10 Kg of Micropool Finisher  
+ 1L of hardener

Volume: 10 Kg

Suitable for:



Vertical  
surfaces



Floors

Properties:



UNE EN 13813  
CT-C40-F10



Antislip



# micropool® BASE

29 Micropool Base is a two-component regularization coating that is used as a previous step to the application of Micropool Finisher. It is especially indicated for applications on surfaces immersed in water. It has a thicker granulometry to regularize the substrate. Its application is made with a trowel directly on the gunite or concrete surfaces. It is recommended to apply two coats of Micropool Finisher over the Micropool Base.

Classified according to UNE-EN 13813 as CT-C40-F10.

Consumption: 1 Kg/m²

Proportion: 10 Kg of Micropool Base + 1L of hardener

Volume: 10 Kg

Suitable for:



Vertical  
surfaces



Floors

Properties:



UNE EN 13813  
CT-C40-F10



Antislip



# microne<sup>®</sup>

## - THE SIMPLICITY -

### READY-TO-USE MICROCEMENT

The Microne microcement line is characterized by being ready-to-use and waterproof in paste. Ready-to-use because it does not need neither resin nor water for its preparation. It is enough to add the color and shake. Thanks to its high impermeability it is not necessary to apply several coats of pore sealer to protect it. A couple of coats of varnish is enough to avoid dust and stains. In addition, the possible marks of the roller and those produced by the absorption of the surface are avoided.

Obviously the time of execution of work decreases considerably by not requiring layers of pore sealer or waiting additional time between coats.

Ideal for humid areas such as bathrooms, shower trays or exteriors as it does not darken due to water. It has a great adhesion on different substrates and very good resistance to wear. Easy workability and application. Not suitable for swimming pools or surfaces in continuous immersion.

### MICRONE'S CHARACTERISTICS



Waterproof



2 Versions:  
Continuous effect  
Stucco effect

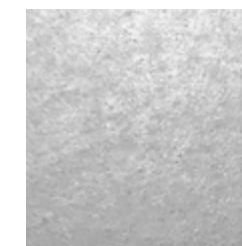
27 MPa

Compressive strength

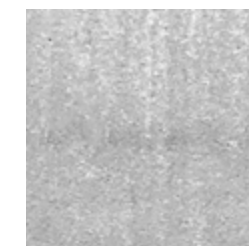
1 Component

Ready-to-use

### GRANULOMETRIES



Fine



Medium



Base





## microne. FINE

32 Microcement of fine texture finish. After adding the toner of the chosen color you will obtain a smooth decorative surface with or without stucco effect. It is recommended only for vertical and non-trafficable surfaces, since it does not have non-slip properties.

Consumption: 0,5 Kg/m<sup>2</sup>

Volume: 10 Kg

Suitable for:



Vertical surfaces



## microne. MEDIUM

Microne Medium has thicker granulometry than Microne Fine. With or without stucco effect. After adding the toner of the chosen color, the result will be a slightly textured surface, much more resistant and of superior hardness. The grain size provides it with anti-slip properties. It can be applied on a multitude of surfaces, however, its most recommended use is on medium traffic pavements. It can also be applied on Vertical surfaces or walls.

Consumption: 0,6 Kg/m<sup>2</sup>

Volume: 10 Kg

Suitable for:



Vertical surfaces



Floors

Properties:



Antislip



## microne. BASE

Microcement of low roughness texture. Without Stucco effect. After adding the toner of the chosen color you will obtain a decorative finish with a very good planimetry on horizontal surfaces. It stands out for having a greater anti-slip power and for being more resistant and harder than the Medium and Fine. It is recommended for floors and medium traffic pavements. It can also be applied on Vertical surfaces or walls.

Consumption: 1 Kg/m<sup>2</sup>

Volume: 10 Kg

Suitable for:



Vertical surfaces



Floors

Properties:



Antislip





# microröck®

## - THE STRENGTH -

### DUAL-COMPONENT MICROCEMENT

The Microröck microcement line is characterized by being bicomponent and waterproof. It's a product of incomparable characteristics until now, as it is a microcement whose hardness is superior to that of polished cement with a mineral appearance. In addition, its compressive and tensile strength is unmatched. Thanks to this, sealants do not soften the product and the microcement is not affected by solvents or chemical compounds.

Thanks to its impermeability, it is not necessary to apply several coats of pore sealer to protect it. A couple of coats of varnish is sufficient to prevent dust and stains.

34

Microröck surfaces do not fissure or crack and do not stain. It has a high adherence to any support and specially designed to be applied in high traffic areas.

### MICRORÖCK'S CHARACTERISTICS



Waterproof



2 Versions:  
Continuous effect  
Stucco effect

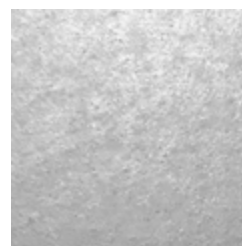
80 MPa

Compressive strength

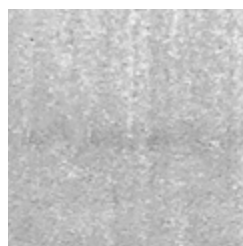
2 Components

Ready-to-use + hardener

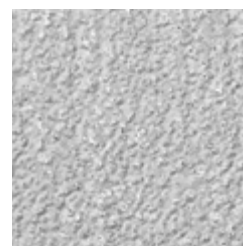
### GRANULOMETRIES



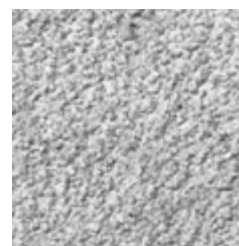
Fine



Medium



Base



Thick Base



35



## microörök. FINE

36 Microcement of fine texture finish. After adding the toner of the chosen color you will obtain a smooth decorative surface with or without stucco effect. It is recommended for both vertical and horizontal surfaces.

Classified as CT-C40-F10 according to the UNE-EN 13813 standard.

Consumption: 0,5 Kg/m<sup>2</sup>

Proportion: 10 Kg of Microröck Fine + 1L of hardener

Volume: 10 Kg

Suitable for:



Vertical surfaces



Floors

Properties:



UNE EN 13813  
CT-C40-F10



## microörök. MEDIUM

Microröck Medium has thicker granulometry than Microröck Fine. With or without stucco effect. After adding the toner of the chosen color, the result will be a slightly textured surface, much more resistant and of superior hardness. The grain size provides it with anti-slip properties. It can be applied on a multitude of surfaces, however, its most recommended use is on high traffic pavements. It can also be applied on Vertical surfaces or walls.

Classified as CT-C40-F10 according to the UNE-EN 13813 standard.

Consumption: 0,6 Kg/m<sup>2</sup>

Proportion: 10 Kg of Microröck Medium + 1L of hardener

Volume: 10 Kg

Suitable for:



Vertical surfaces



Floors

Properties:



UNE EN 13813  
CT-C40-F10



Antislip



## microörök. BASE

Microcement with roughness, resistance and hardness superior to Medium. Without Stucco effect. It stands out for its high anti-slip power. After adding the toner of the chosen color you will get a rough decorative finish, with a high planimetry that allows the product to match very well on horizontal surfaces. It is recommended for floors and extreme traffic pavements. It can also be applied on Vertical surfaces.

Classified according to UNE-EN 13813 as CT-C40-F10.

Consumption: 1 Kg/m<sup>2</sup>

Proportion: 10 Kg of Microröck Base + 1L of hardener

Volume: 10 Kg

Suitable for:



Vertical surfaces



Floors

Properties:



UNE EN 13813  
CT-C40-F10



Antislip



## microörök. THICK BASE

37 Single-component microcement that is used as a previous step for the preparation of microcements Fine, Medium or Base. The regularization of the aggregate is very good due to its size, which allows to obtain a perfect planimetry with a high covering power. It has a very high compressive strength. In case of opting for the application of Microröck Fine, it is convenient to apply one or two coats of Microröck Medium previously to fill the Thick Base. In this way we will need fewer coats of Microröck Fine, so we will get more hardness to compression.

Classified according to UNE-EN 13813 as CT-C40-F10.

Consumption: 1,5 Kg/m<sup>2</sup>

Proportion: 10 Kg of Microröck Base + 1L of hardener

Volume: 10 Kg

Suitable for:



Vertical surfaces



Floors

Properties:

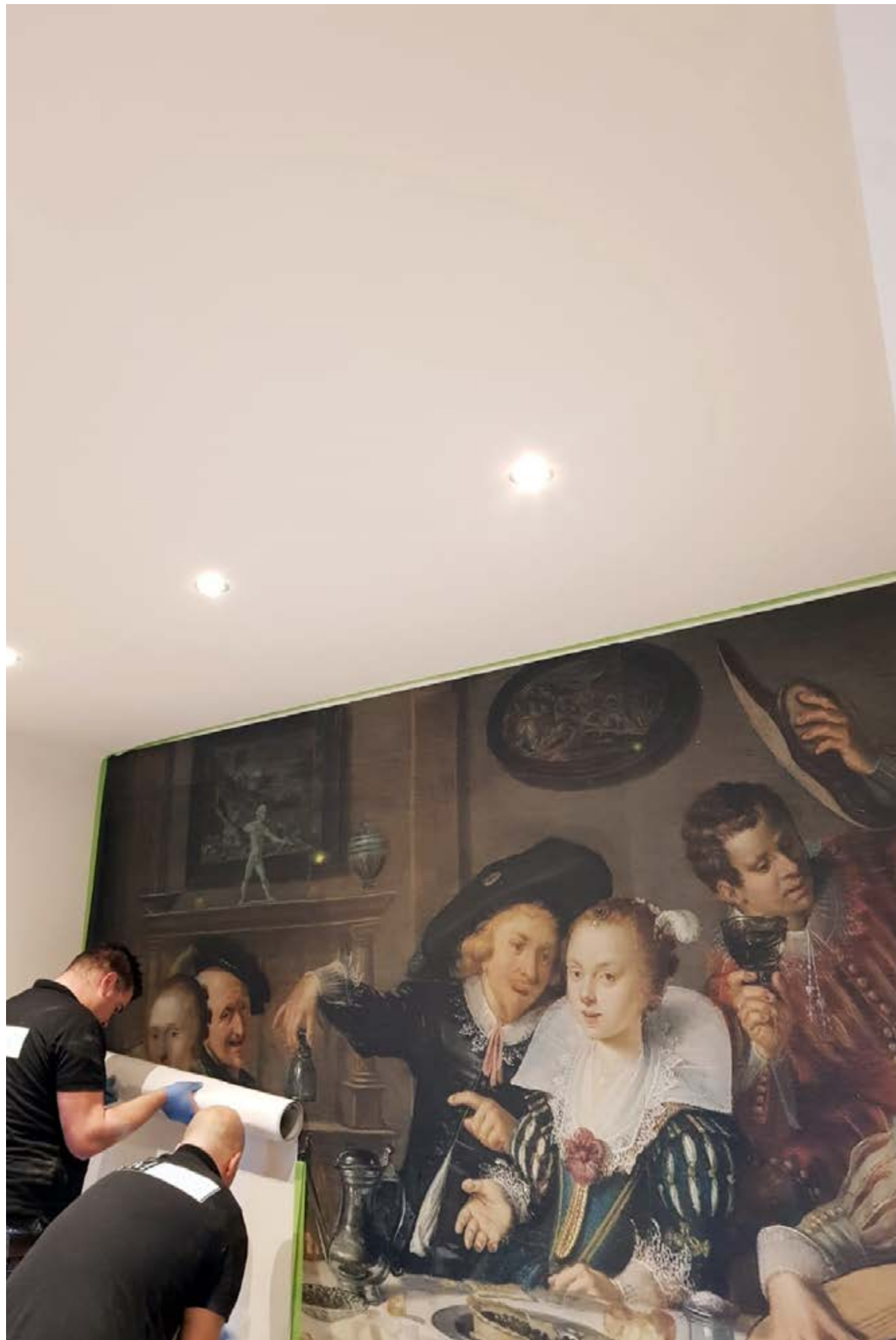


UNE EN 13813  
CT-C40-F10



Antislip





# microflex

## - THE FLEXIBILITY -

### DUAL-COMPONENT MICROCEMENT

The Microflex line of two-component microcement is characterized above all by its great flexibility. It can be rolled up as if it were a fabric. Even with multiple, thick layers, it remains a very flexible material. It has not yet been equaled by any other coating. In addition, it is waterproof, a really important attribute depending on the surface where it is to be applied.

Its flexibility makes this microcement the ideal product for buildings or constructions with a lot of structural movement. Especially in metal or wood structures, due to the processes of expansion and contraction. It is the most suitable microcement to apply on any area with a predisposition to the appearance of cracks or fissures, whatever their origin. It can be applied both indoors and outdoors.

It can be combined with any other CEMHER microcement line, except Microröck.

### MICROFLEX'S CHARACTERISTICS



Waterproof



Minimal stucco effect

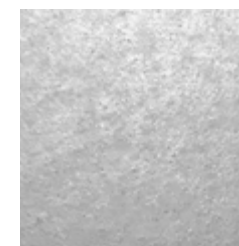
75%

Elongation at break

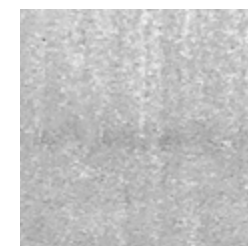
2 Components

Powder + Resin

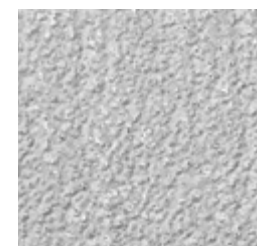
### GRANULOMETRIES



Fine



Medium



Base





## microflex FINE

40

Microcement of fine texture finish. After adding the toner of the chosen color you will obtain a decorative surface with almost no stucco effect. It is recommended for both vertical and horizontal surfaces. Its most recommended use is on walls and floors exposed to the action of water and cracking.

Determination of elongation tensile properties: 75% ISO- 527-3

Watertightness, waterproofing:  
UNE EN 14891:2017 - para. A7

Consumption: 0,5 Kg/m<sup>2</sup>

Proportion: 10 Kg of Microflex Fine + 8 L of Resinflex

Volume: 10 Kg

Suitable for:



Vertical  
surfaces



Floors

Properties:



Crack  
resistance



## microflex MEDIUM

Microflex Medium has thicker granulometry than Microflex Fine. With almost no stucco effect. After adding the toner of the chosen color, the result will be a slightly textured surface, much more resistant and of superior hardness. The grain size provides it with anti-slip properties. It can be applied on a multitude of surfaces, however, its most recommended use is on walls and floors exposed to the action of water and cracking.

Determination of elongation tensile properties: 68% ISO- 527-3

Watertightness, waterproofing:  
UNE EN 14891:2017 - para. A7

Consumption: 0,6 Kg/m<sup>2</sup>

Proportion: 20 Kg of Microflex Medium + 10 L of Resinflex

Volume: 20 Kg

Suitable for:



Vertical  
surfaces



Floors

Properties:



Crack  
resistance



Antislip



## microflex BASE

Microcement with a roughness, resistance and hardness above average. Without stucco effect. It stands out for its high anti-slip power. After adding the toner of the chosen color you will obtain a rough decorative finish, with a high planimetry that allows the product to match very well on horizontal surfaces. It is recommended for walls and floors exposed to the action of water and cracking.

Determination of elongation tensile properties: 65% ISO- 527-3

Watertightness, waterproofing:  
UNE EN 14891:2017 - para. A7

Consumption: 1 Kg/m<sup>2</sup>

Proportion: 20 Kg of Microflex Base + 8 L of Resinflex

Volume: 20 Kg

Suitable for:



Vertical  
surfaces



Floors

Properties:



Crack  
resistance



Antislip



## RESINFLEX

Resinflex is a special resin for two-component microcement systems (Microflex). Mixed in the right proportion, it provides excellent compatibility, hardness and adhesion to Microflex microcement systems.

Volume: 8 L and 10 L

41

# PIGMENTS



TONERS

40 color toners for microcement systems. They should be mixed with water for Microduo, Microdur, Microlevel, Microne Stucco Effect or Continuous Effect, Microrock Stucco Effect or Continuous Effect, Micropool and Microflex systems.

Volume: 50g, 100g, 125g, 200g, 250g and 500g.



44



Montblanc



Gobi desert



Bisón



Piedra de lago



Vino blanco



Heno viejo



Chocolate



Nebulosa



Malta



Safari



Smoked topaz



Concrete



El álamo



Parrot



Deer



Acero



Escorial



Teide



Diamond



Midas



Titanium



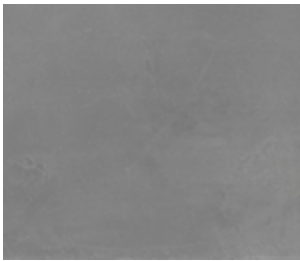
Nepal



Silver



Giallo Horus



Grafeno



Everest



Bora bora



Sunset



Roca alpina



Nicaragua



Poseidón



Coral



Selenita



Obsidiana



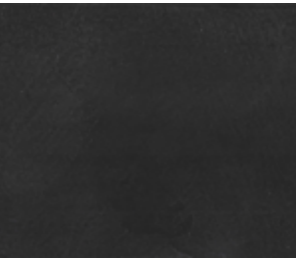
Ocean



Industrial chic



Cráter Volcánico



Galaxy



Vino tinto



Red planet

45





DYE

46

Highly additive polymers with mineral pigments. With these 41 concentrates you can obtain each and every one of the colors of our color chart.

If you wish to obtain more colors, with these 41 concentrates you can create up to 8 gradations of each concentrate, obtaining a total of 328 colors.

Volume: 1L

Concentrates:	90	700	3200	6020
	100	720	4170	6030
	200	760	4200	6100
	230	790	4300	7200
	300	840	4600	10200
	330	850	4900	10850
	340	900	5400	14610
	350	1200	5600	
	360	1300	5700	
	370	2100	5800	
	400	3100	6010	

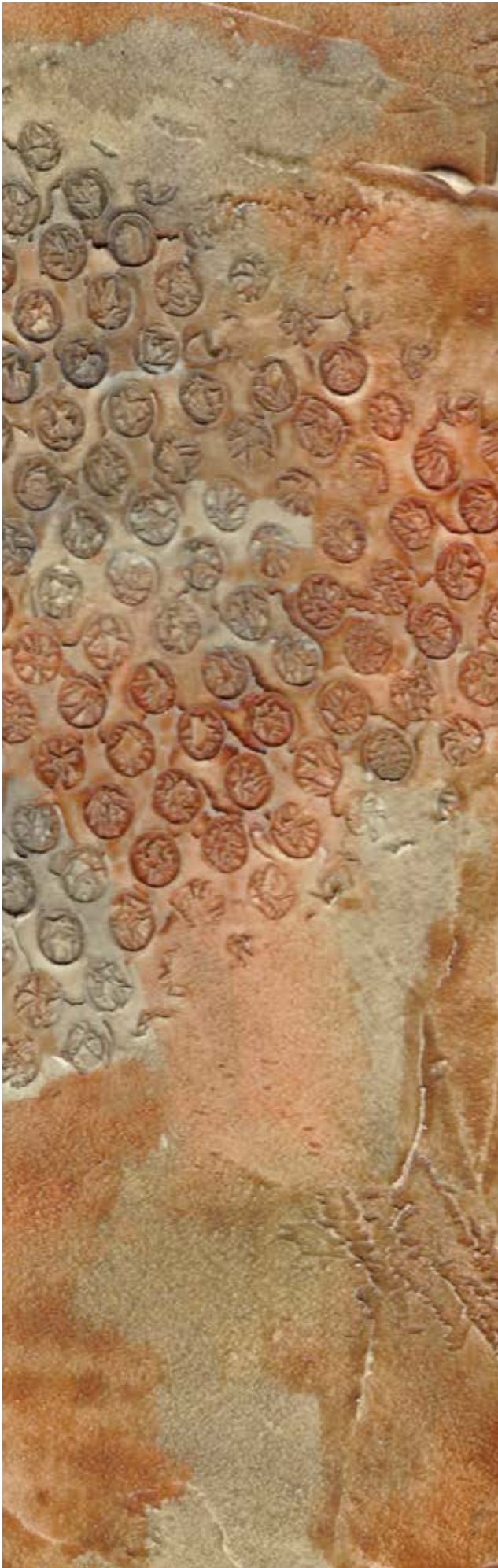


CONCENTRATE

Range of inorganic pigments with good resistance to UV radiation and weathering. High concentration for coloring all our waterborne product lines.

Volume: 1L

- Colors:
- White
  - Yellow SS
  - Red SS
  - Black SS
  - Yellow XX
  - Red XX
  - Black XX
  - Yellow OX AD
  - Red OX AD
  - Black C501
  - Yellow AD
  - Red live AD
  - Blue AD
  - Green AD



STONE EFFECT

47

Highly decorative pigments on acrylic base and with very good penetrability, specially designed for use in microcement or concrete.

Stone Effect creates a wide variety of natural effects. Unlike the acids on the market, which have a similar effect, Stone Effect does not require a chemical reaction. This makes possible to control the coloration and therefore the final aesthetic result.

It can be applied by spray, sponge or brush.

Consumption: 10 - 12 m²/L

Volume: 1L



# PREPARATION

PRIMERS



## PRIMER 100

Water-based resin that acts as an adhesion promoter between a **porous or very porous surface** and micro-cement. It stands out for its high adhesion and its high solids content with which it manages to saturate porous substrates and keep the resin on the surface. It has a great elasticity that makes it resist excellently to different weather conditions. It maintains the adhesive capacity (residual tack) for approximately 12 hours.

Consumption: 6 - 8 m<sup>2</sup>/L

Volume: 5L and 25L



## PRIMER TAC

Water-based resin that acts as an adhesion promoter between a **non-porous surface (tile, marble, metal or terrazzo)** and microcement. It stands out for its high adhesion and for maintaining the adhesive capacity (residual tack) permanently, which allows a high time of action in the application of the subsequent layer of microcement. It has a great elasticity that makes it resist excellently to different weather conditions.

Consumption: 6 - 8 m<sup>2</sup>/L

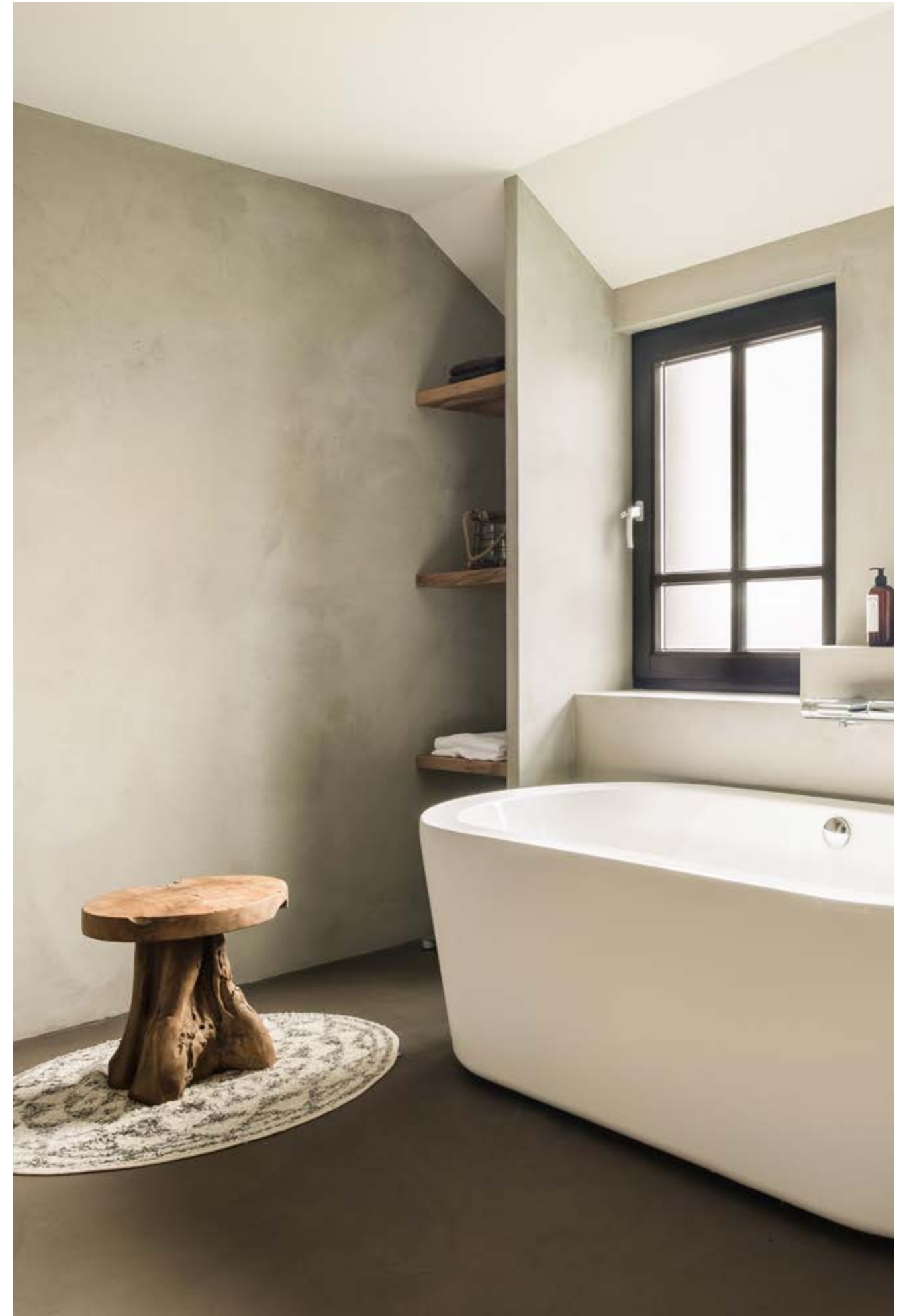
Volume: 5L and 25L





# PREPARATION

## VAPOR BARRIER





## IMPRIPOX

54 Two-component epoxy resin with high solids content (80%). High chemical resistance and impermeability. Acts as a vapor barrier to block rising damp and inhibits the appearance of moisture stains in tile joints. It can also be used as a colorless epoxy varnish on microcements or mortars. It has high chemical and mechanical resistance and scratch resistance. Easy to apply by roller.

Consumption: 6 - 7 m<sup>2</sup>/L

Volume: 5 L + 2 L



## AQUASELL

Two-component water-based epoxy resin. It stands out for its very high adhesion even on surfaces with certain humidity (less than 8%). It acts as a vapor barrier to block rising humidity. It can also be used as a water-based epoxy varnish on microcements or mortars. It has high chemical and mechanical resistance and stands out for its high scratch resistance and impermeability. Does not contain organic solvents.

Consumption: 8 m<sup>2</sup>/L

Volume: 5 L + 2 L



## EPOXY CRISTAL 100% SOLIDS

55 Two-component 100% solids epoxy resin. It stands out for its high filling power and transparency. Very high chemical resistance and impermeability. Acts as a vapor barrier to block rising humidity. It should be applied with a trowel pouring the product on the floor with the help of a spiked roller, to dissipate the bubbles produced by the agitation in the mixture of the two components. It can also be used as an epoxy varnish with a very high gloss finish and crystalline hardness. It has a higher viscosity than 3D epoxy, so it can be used for filling joints, cracks, expansion joints, etc. It is ideal for repairs. Not suitable for exterior use.

Consumption: 1 m<sup>2</sup>/L

Volume: 5 L + 2 L



# PREPARATION

PORE SEALERS





# HYDROPRIMER CI

58

Single-component high solids acrylic sealer. Waterproofs the substrate and seals it for the subsequent application of polyurethane finishes. Reduces the consumption of polyurethane finishes and avoids kneading due to its pore-covering action.

Consumption: 10 m²/L

Volume: 5 L



# HARD SEALANT

One-component polyurethane consolidating pore sealer. It not only waterproofs and seals the substrate like acrylic sealers, but also provides an extraordinary final hardness to the whole system (the harder the base, the harder the final finish). It has a fast drying time that will allow the application of polyurethane finishes in less time than with conventional acrylics. In addition, it stands out for the low or null alteration of the color of the microcement.

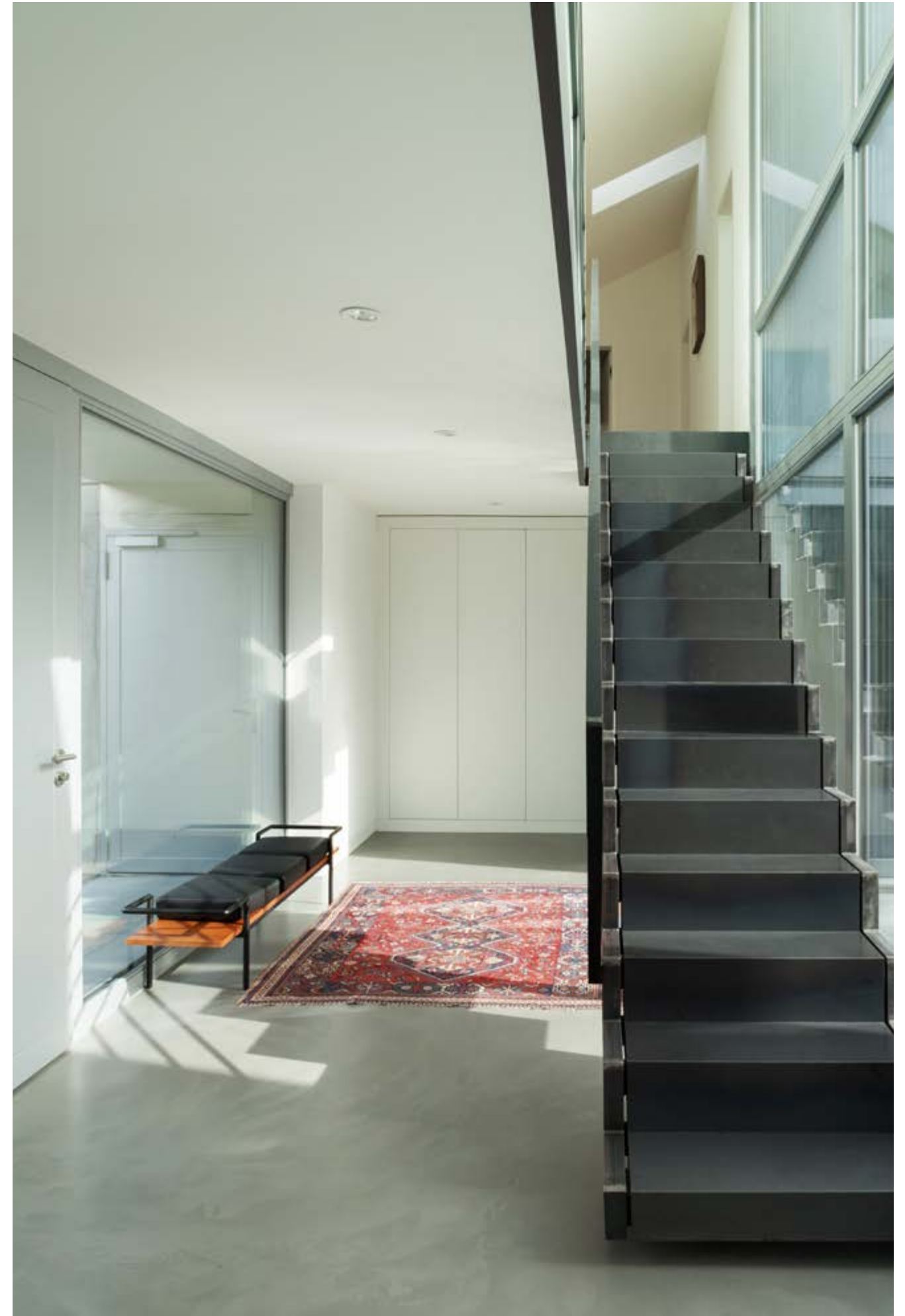
Consumption: 10 m²/L

Volume: 5 L

59

# SEALANTS

## POLYURETHANES





## AQUAMAX PLUS

62

Two-component water-based polyurethane varnish of excellent hardness and good chemical resistance. It stands out for its easy application, leaving a very uniform final appearance without marks or kneading. Allows to obtain stretched finishes, without defects and with a soft touch. High resistance to chemical agents such as bleach, hydrochloric acid or vinegar. Protects against wine, coffee and oil stains. It must be previously sealed with Hydroprimer or Hard Sealant. Suitable for indoor and outdoor applications. Matt, satin or gloss finish.

Consumption: 10 m<sup>2</sup>/L

Proportion: 10% (5 L comp "A" + 0,5 L comp "B")

Finish: gloss, satin and matt

Volume: 5 L + 0,5 L



## AQUAMAX DUR <sup>VI</sup>

Two-component water-based polyurethane varnish of very high hardness and chemical resistance. Suitable for high traffic surfaces. Very high resistance to scratching and chemical agents such as bleach, hydrochloric acid or vinegar. Protects against wine, coffee and oil stains. It has a **higher solids content than Aquamax Plus**, so it provides greater filling capacity with more resistant finishes. Very fast drying, it is recommended to make partial mixtures. It must be previously sealed with Hydroprimer or Hard Sealant. Suitable for indoor and outdoor applications. Matt, satin or gloss finish.

Consumption: 8 - 10 m<sup>2</sup>/L

Proportion: 20% (5 L comp "A" + 1 L comp "B")

Finish: gloss, satin and matt

Volume: 5 L + 1 L



## AQUAMAX EXTREME <sup>VI</sup>

Two-component water-based polyurethane varnish of very high hardness and chemical resistance, even **superior to solvent-based polyurethanes**. Very high solids content that provides a great covering power with very resistant finishes. Ideal for high traffic systems and areas where the highest demands are required. Unalterable to chemical agents such as bleach, hydrochloric acid or vinegar. Protects against wine, coffee and oil stains. It must be previously sealed with Hydroprimer or Hard Sealant. Suitable for indoor and outdoor applications. Matt, satin or gloss finish.

Consumption: 8 m<sup>2</sup>/L

Proportion: 20% (5 L comp "A" + 1 L comp "B")

Finish: gloss, satin and matt

Volume: 5 L + 1 L



63





## MAXIPUR 25%

Two-component solvent-based aliphatic acrylic polyurethane varnish. It has a **higher viscosity and solids content than Maxipur 50%**, which provides a **higher filling and covering capacity**. Allows to obtain thicker films with a great chemical resistance and a very high hardness for highly demanding finishes. Ideal for high traffic areas. It is very important to seal previously with the Hydroprimer or Hard Sealant to prevent the product from altering the color of the microcement and have perfect finishes without irregularities. Suitable for indoor and outdoor applications. Does not yellow.

Consumption: 8 - 9 m<sup>2</sup>/L

Proportion: 25% (4 L comp "A" + 1 L comp "B")

Finish: gloss, satin and matt

Volume: 4 L + 1L



## MAXIPUR 50%

Two-component solvent-based aliphatic acrylic polyurethane varnish. It stands out for its excellent hardness, very high chemical resistance and non-yellowing in exterior applications.. Posses **lower viscosity than Maxipur 25%**, great penetration and adhesion on various substrates. Suitable for high traffic systems due to its high resistance to friction and excellent surface hardness. It is very important to seal previously with Hydroprimer or Hard Sealant to prevent the product from altering the color of the microcement and to have perfect finishes without irregularities. Suitable for indoor and outdoor applications.

Consumption: 10 m<sup>2</sup>/L

Proportion: 50% (4 L comp "A" + 2 L comp "B")

Finish: gloss, satin and matt

Volume: 4 L + 2L



## MAXIPUR 100%

Two-component solvent-based aliphatic acrylic polyurethane varnish. Specially designed for surfaces with extreme traffic. **Very low viscosity material**, highly **impermeable and resistant to chlorine and bleach**. Contains a high amount of solids. Specially indicated as **protection in immersion or sealer for swimming pools and ponds**, since it provides to the varnished supports (microcement, wood, etc.) an extreme hardness and a high impermeability. It also stands out for its application without irregularities. Does not cause orange peel effect or kneeling. Posses high planimetry even when applied with a roller. It is recommended to apply previously Hydroprimer. Suitable for indoor and outdoor applications.

Consumption: 12 m<sup>2</sup>/L

Proportion: 100% (4 L comp "A" + 4 L comp "B")

Finish: gloss, satin and matt

Volume: 4 L + 4L





# **SPECIALTIES**

RETAIL DESIGN





## PRIMER CRAQUECEM

68 Water-based resin that acts as a primer for Craquecem coating. It can be colored so that when the Craquecem cracks, the color chosen for the Primer Craquecem can be seen in the crack opening.

It is essential to apply this product for the Craquecem to crack.

Consumption: 2 L/m<sup>2</sup>

Volume: 1 L



## CRAQUECEM

Waterproof coating in ready-to-use paste format. Creates aesthetic finishes with cracked effect, imitates surfaces deteriorated or aged by the passage of time. A previous application of Primer Craquecem is required.

Excellent adhesion to an infinite number of substrates. The primer can be colored, so that when the cracking effect is created, the color will appear in the cracks. Likewise, the mortar can also be colored if desired.

Consumption: 2 Kg/m<sup>2</sup>

Volume: 5 Kg

Suitable for:



Vertical  
surfaces



Floors







## microterrazzo RIAZZA

70 The Microterrazzo Riazza collection is composed of coarse-grained microcement (<0.4mm) mixed with **natural colored flakes**, called **Riazza**. Only available for the Microdur line.

Suitable for both indoor and outdoor applications.

This collection set in the 70s revives the past: reconverting vintage into contemporary. The Microterrazzo is an example of this... Never say never.

Consumption: 2 Kg/m<sup>2</sup>

Finishes: wide chromatic variety and possibility of multiple combinations

Volume: 20 Kg

Suitable for:



Vertical  
surfaces



Floors

Properties:



UNE EN 13813  
CT-C40-F10



## microterrazzo CRYSTAL

The Microterrazzo Crystal collection is composed of coarse-grained microcement (<0.4mm) mixed with **crystals and minerals** called **Crystal**.

Available for the Microdur and Microrock lines.

In Cemher we not only take care of the aesthetics of the coating but also its performance, so we manufacture this collection for the Microdur and Microrock lines. This way it can be applied in multiple surfaces, from walls and high traffic floors to swimming pools. Suitable for both indoor and outdoor applications.

Consumption: 2 Kg/m<sup>2</sup>

Finishes: wide chromatic variety and possibility of multiple combinations.

Volume: 20 Kg - Microdur  
11 Kg - Microrock + hardener

Suitable for:



Vertical  
surfaces



Floors

Properties:



UNE EN 13813  
CT-C40-F10







## miconature

72

The Micronature collection is composed of coarse-grained microcement (<0.4mm) mixed with **recycled particles** (seeds, wood, straw, etc.). Micronature presents a large number of effects, all of them very different from each other, but with a common denominator: they all evoke nature.

The final aesthetic result is an atmosphere of well-being, delicacy and tranquility in perfect harmony with any style of decoration or architecture.

We manufacture this collection for the Microdur line. This way it can be applied on multiple surfaces, walls and floors. Suitable for both indoor and outdoor applications.

Consumption: 2 Kg/m<sup>2</sup>

Finishes: wide chromatic variety and possibility of multiple combinations.

Volume: 20 Kg

Suitable for:



Vertical surfaces



Floors

Properties:



UNE EN 13813  
CT-C40-F10



73



# **SPECIALTIES**

METALLICS AND OXIDES







## METALGLAZE

76 Range of ready-to-use metallic glazes to create subtle metallic effects. It is applied in thin layers of metallic paint. In this way the background color is combined with the top metallic glaze.

Consumption: 25 m<sup>2</sup>/L

Finishes: Gold, Silver and Bronze.

Volume: 1 L



## METALPAINT

Highly decorative metallic paint for interior and exterior use. Easy application in one coat. Excellent resistance to weathering, aging and cleaning. Suitable for all kind of surfaces, such as: wood, iron, stone, etc.

Consumption: 10 m<sup>2</sup>/L

Finishes: Gold, Silver and Copper.

Volume: 1 L







## metalresin

78 Two-component decorative metallic coating for Vertical surfaces in interiors and exteriors. Made from selected metal alloy powders and water based resins. Metalresin is specially developed to be polished or to be oxidized.

Consumption: 1,5 Kg/m<sup>2</sup>

Finishes: Gold, Silver, Bronze and Copper

Volume: Gold, Bronze or Copper: 3 Kg + 750 ml  
Silver: 2,5 Kg + 1 L

Suitable for:



Vertical  
surfaces



## metalplus

Decorative three-component metallic coating for Vertical surfaces and horizontal surfaces both indoors and outdoors. Made from selected metal alloy powders, two-component epoxy resin compounds and special rheological additives to ensure excellent workability, adhesion and high hardness.

The application of Metalplus allows to obtain unique textures, enhancing the original and exclusively treated surfaces, transforming them into real metal.

Metalplus is specially developed to be polished or to be oxidized.

Consumption: 1,5 Kg/m<sup>2</sup>

Finishes: Gold, Silver, Bronze and Copper

Volume: Gold, Bronze or Copper: 3 Kg + (0,5L + 0,2L)  
Silver: 2,5 Kg + (1L + 375 ml)

Suitable for:



Vertical  
surfaces



Floors



79





## micrometal

80 Innovative, highly decorative, two-component, water-proof coating.

It can be oxidized and polished, highlighting the beauty of the metal. The white base allows to be pigmented, being able to achieve an infinity of different colors. Specially indicated for decoration of walls and furniture. Also for outdoor and indoor wet areas, such as showers.

Consumption: 1,5 Kg/m<sup>2</sup>

Finishes: Gold, Silver, Bronze, Copper and Steel

Volume: 10 Kg

Suitable for:



Vertical surfaces



Floors



## oximetal

Two-component corten steel coating for vertical and horizontal surfaces in interiors and exteriors applications. Made from steel powders and water-based resins. Oximetal is specially developed to be oxidized but can also be polished.

Consumption: 1,5 Kg/m<sup>2</sup>

Finish: Steel

Volume: 3 Kg + 750 ml y 10 Kg + 5 L

Suitable for:



Vertical surfaces



Floors



Antislip

Properties:



81





## Oxidher ACTIVATOR

82

The Oxidher Activator applied on Oxymetal, Metalresin, Metalplus or Micrometal, allows the creation of the corten steel system. Any metallic surface can be oxidized in less than five minutes. Its base has been specially designed to oxidize metallic particles: steel, copper, gold, bronze and others.

Consumption: 13 - 15 m<sup>2</sup>/L

Colors: Red, Green, Blue, Nordic Green, Nordic Blue and Nordic Copper Yellow

Volume: 1 l



## Oxidher SEALER

Como su propio nombre indica es un sellador protector, transparente al agua, para la protección de superficies tratadas con acabados Oxidher. Puede aplicarse tanto en interior como en exterior.

Su fórmula especial crea una fina barrera filmógena que reduce el desmoronamiento normal de las superficies oxidadas y aumenta la resistencia al agua.

Consumption: 10 m<sup>2</sup> / l

Volume: 1 L y 5 L



83





## **SPECIALTIES**

DECORATIVE SELF-LEVELING  
COATING AND CONTINUOUS  
TERRAZZO



## decolevel floor.

86 Decorative self-leveling polymeric mortar. Formulated in white base so that it can be colored in any color. High technical performance, to apply from 2 to 7 mm thick, for the realization of continuous pavements for decorative use. Its appearance is warm and innovative in the interiors, resulting most advantageous in homes and stores and bringing them an avant-garde look.

Classified according to UNE-EN 13813 as CT-C40-F10.

Consumption: 1,7 Kg/m<sup>2</sup>

Colors: 40 colors from our color chart

Proportion: 20 Kg of Decolevel Floor + 5,5 L of water

Volume: 20 Kg

Suitable for:



Floors

Properties:



UNE EN 13813  
CT-C40-F10



## decolevel fast.

Decorative self-leveling mortar with the same properties as Decolevel Floor.

The difference between one and the other is that Decolevel Fast has a rougher finish and is only available in ash gray color.

In addition, it has a faster drying time of 4 to 5 hours.

Consumption: 1,7 Kg/m<sup>2</sup>

Color: Ash Gray

Proportion: 20 Kg of Decolevel fast + 5,5 L of water

Volume: 20 Kg

Suitable for:



Floors

Properties:



UNE EN 13813  
CT-C40-F10







## decoterrazzo

88

Two-component polymeric self-leveling mortar. Its specially formulated white base can be tinted to any color and incorporates stones and crystals.

High technical performance, to apply from 2 to 7 mm thick, for the realization of continuous pavements for decorative use. Its appearance is warm and innovative in the interiors, resulting most advantageous in homes and stores and bringing them an avant-garde look.

Consumption: 10 Kg/m<sup>2</sup>

Finishes: multitude of possibilities and chromatic mixtures

Proportion: 20 Kg of Decolevel Floor + 20 Kg of decoterrazzo ( stones or crystals). "For 10 mm thick"

Volume: 20 Kg + 20 Kg

Suitable for:

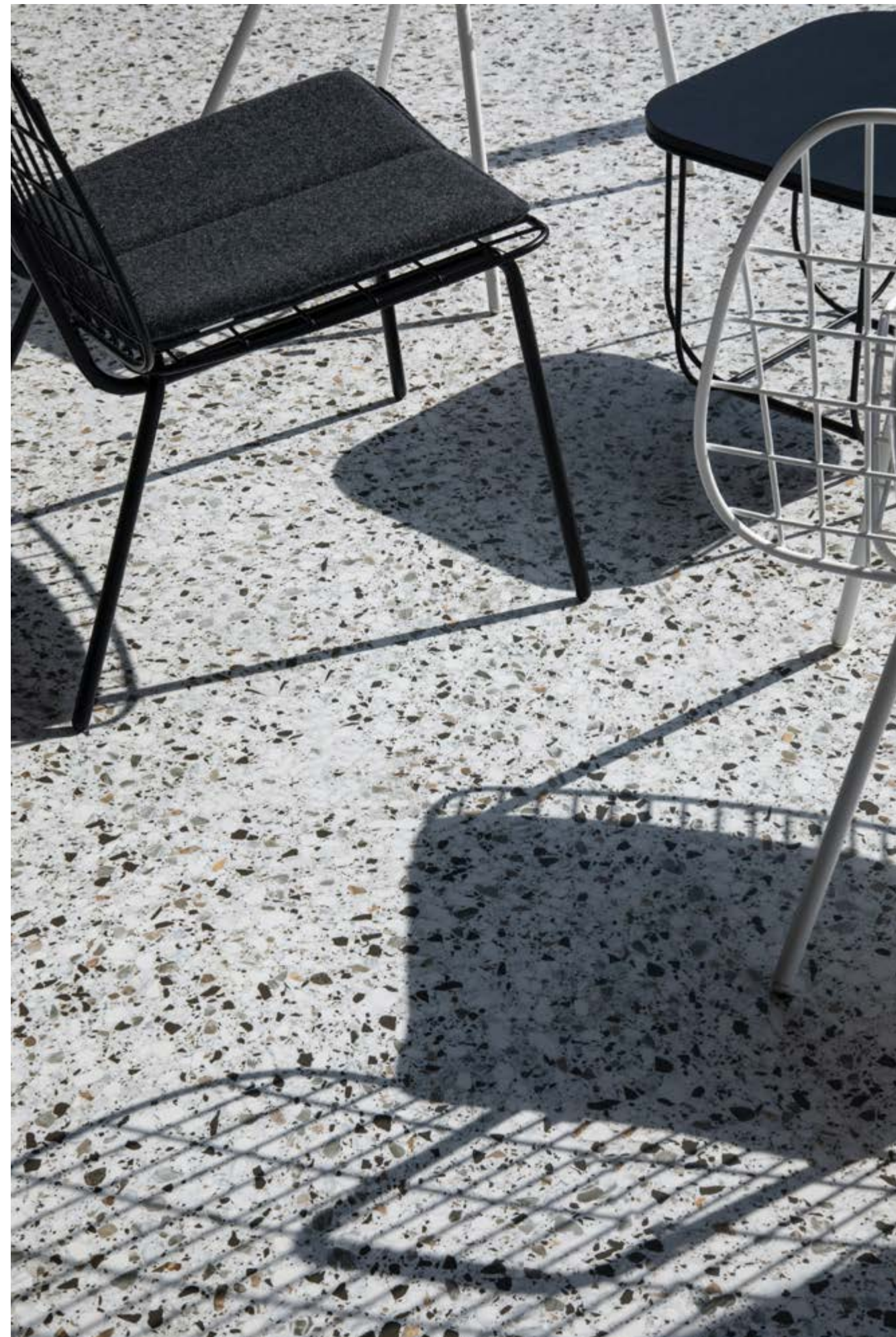
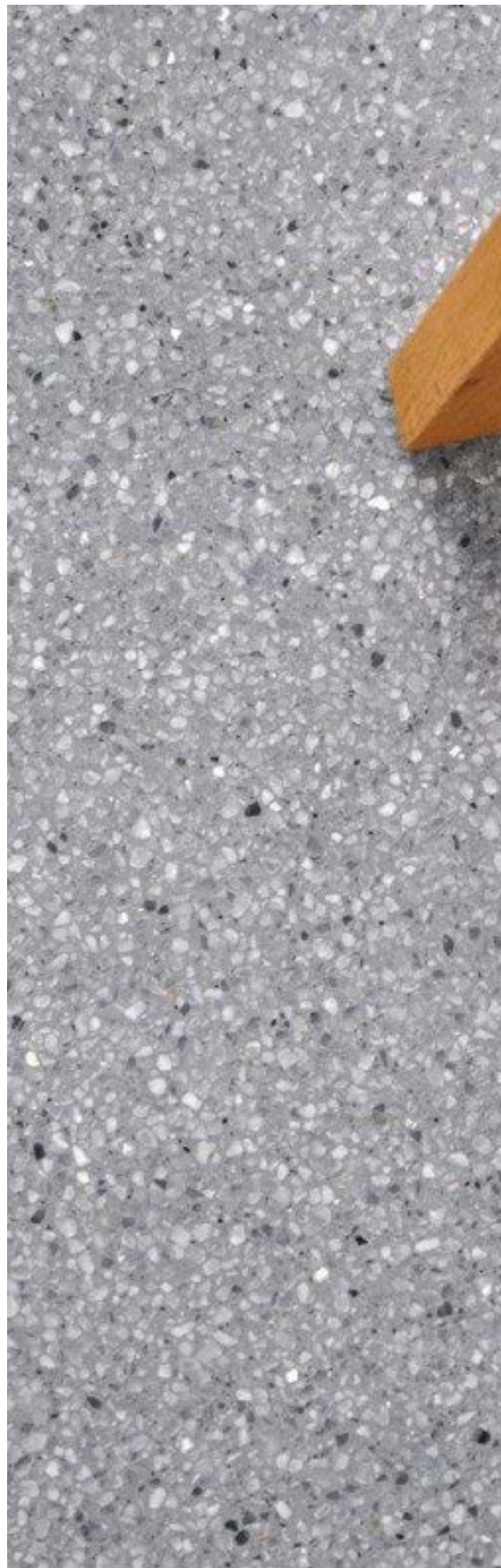


Floors

Properties:



UNE EN 13813  
CT-C40-F10

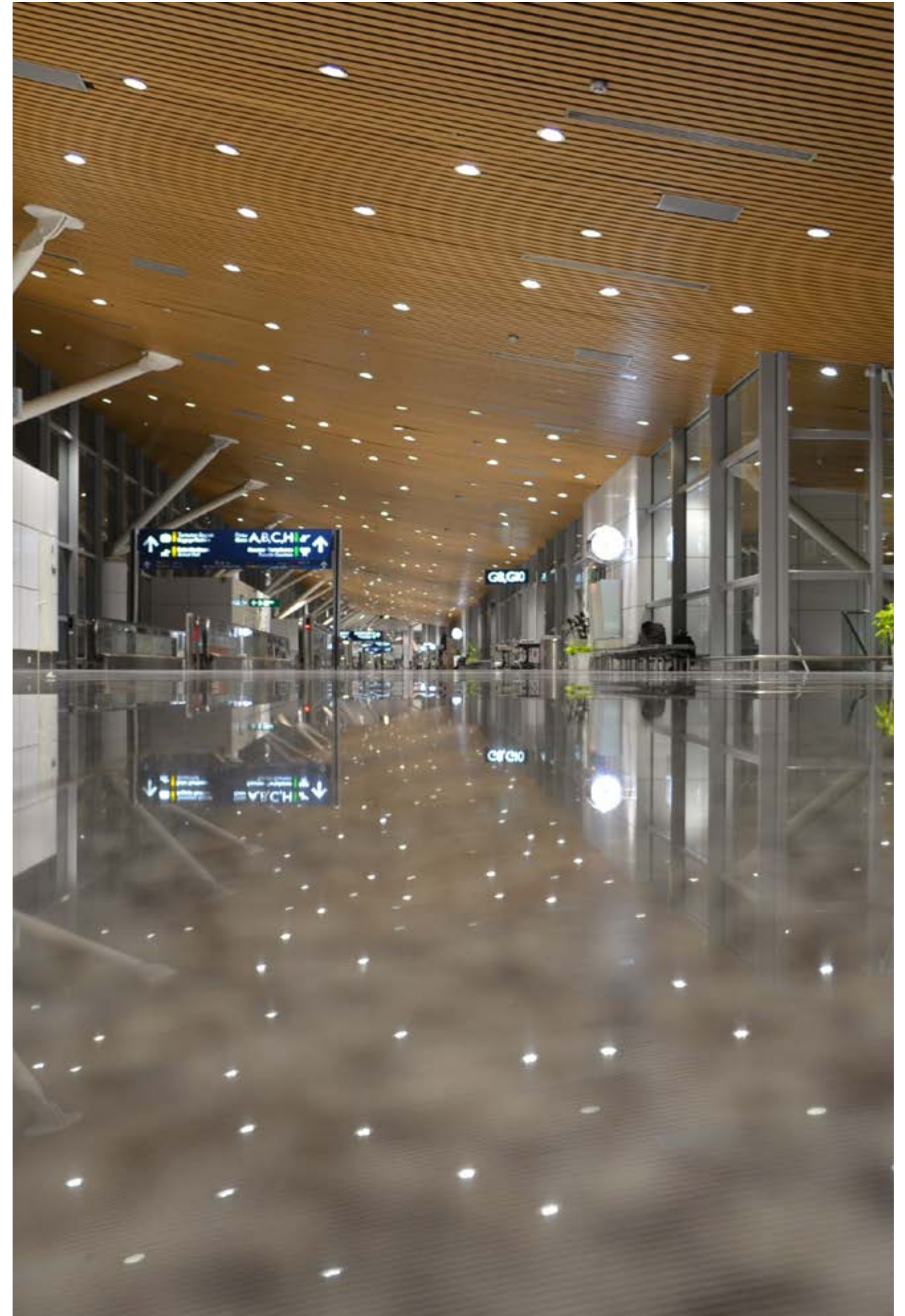


89



# **SPECIALTIES**

## EPOXY RESINS





## AQUAEOX

92 Two-component water-based epoxy paint for floors, walls and ceilings. For interior applications in industrial facilities, garages, basements, warehouses, schools, etc.

Suitable for applications on cement, concrete, plaster, microcement, mortar, wood, iron, etc. Good chemical, mechanical and scratch resistance. Impermeable to water vapor. Does not contain solvents. Can be applied even with a certain degree of humidity in the substrate (concrete humidity below 8%). Not suitable for exterior use.

Consumption: 6 - 7 m<sup>2</sup>/L

Finish: satin

Application: roller, brush or sprayer

Volume: 5 L + 2 L



## EPOXY 3D FLOOR

Transparent 100% solids epoxy resin, to apply in pavements in thicknesses of 1-2 mm to create 3D effects. It has great planimetry and good fluidity. Its transparency makes it ideal as a 3D floor finish, or for covering countertops and floors. It can be tinted with our natural and metallic pigments.

Extremely durable, capable of withstanding intensive use on high traffic pavements

Consumption: 1 m<sup>2</sup>/L

Finish: gloss

Aplicación: notched trowel

Volume: 1 L + 0,5 L or 4 L + 2 L



## EPOXY CASTING

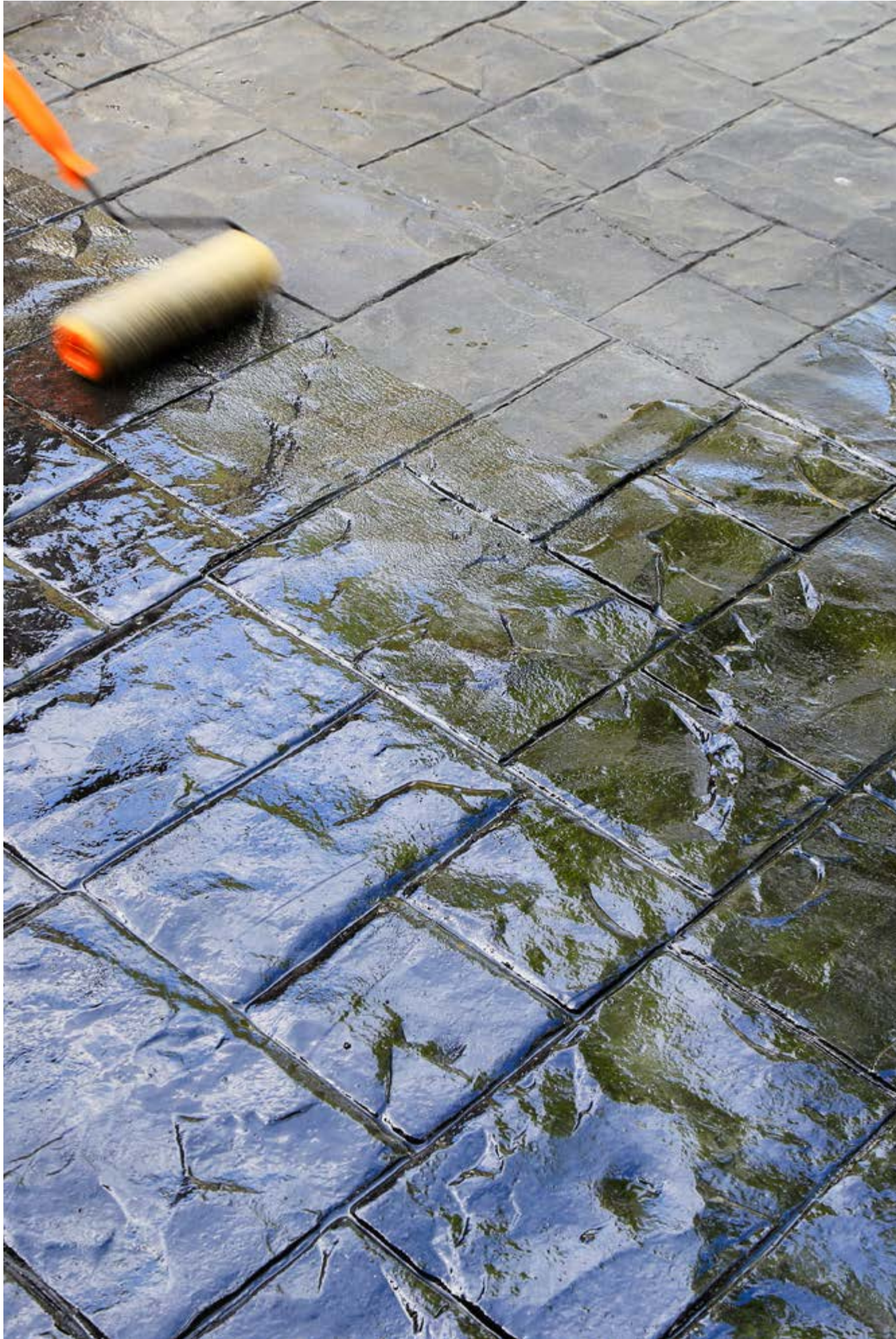
93 Transparent 100% solids epoxy resin for casting and thick encapsulations. Formulated to control resin curing, it can be applied in thicknesses greater than 5 cm. Its transparency makes it ideal for applications in "river type" tables, for jewelry and costume jewelry, among other sectors. Can be dyed with our natural and metallic pigments.

Consumption: 1 m<sup>2</sup>/L

Finish: gloss

Volume: 1 L + 0,4 L or 5 L + 2 L





# **SPECIALTIES**

## MAINTENANCE





## IMPRES AQUA 24

96

One-component waterborne acrylic finish for printed concrete floors and other substrates. Spreads uniformly leaving a completely homogeneous film. Revives the colors of the pavement and prevents premature evaporation of the mixing water.

Consumption: 0,2 Kg/m<sup>2</sup>

Finish: gloss

Aplication: roller or sprayer

Volume: 25 L and 5 L



## IMPRES ULTRA

Waterproof acrylic coating that generates a glossy or matt film on concrete pavements. Specially indicated for printed concrete pavements that require a high protection against wear. Its special formula is developed to extend the life of the pavements, enhancing the color of the print, providing greater resistance to scuffing and supporting moderate traffic. The matt finish provides the same protection, but leaving the natural appearance of the concrete visible.

Consumption: 0,25 Kg/m<sup>2</sup>

Finish: gloss

Aplication: roller or sprayer

Volume: 25 L and 5 L



## STAMPED RESTORE

97

Two-component, cement-based paint. It consists of special aggregates of high hardness and resistance, plus a colored mixing resin. Compatible with all types of surfaces. It is adherent, breathable and of great hardness. It can be supplied with a thicker particle size to create a non-slip surface. Once the Stamped Restore has dried, Impres Aqua 24 should be applied to protect the cement-based coating. This water-based finish sealer provides greater surface hardness to the cementitious paint.

Classified according to UNE-EN 13813 as CT-C40-F10.

Consumption: 0,5 Kg/m<sup>2</sup>

Proportion: 10 Kg Stamped restore + 10 L de resina.

Aplication: roller

Volume: 10 Kg + 10 L

Suitable for:



Vertical surfaces



Floors



UNE EN 13813  
CT-C40-F10



Antislip



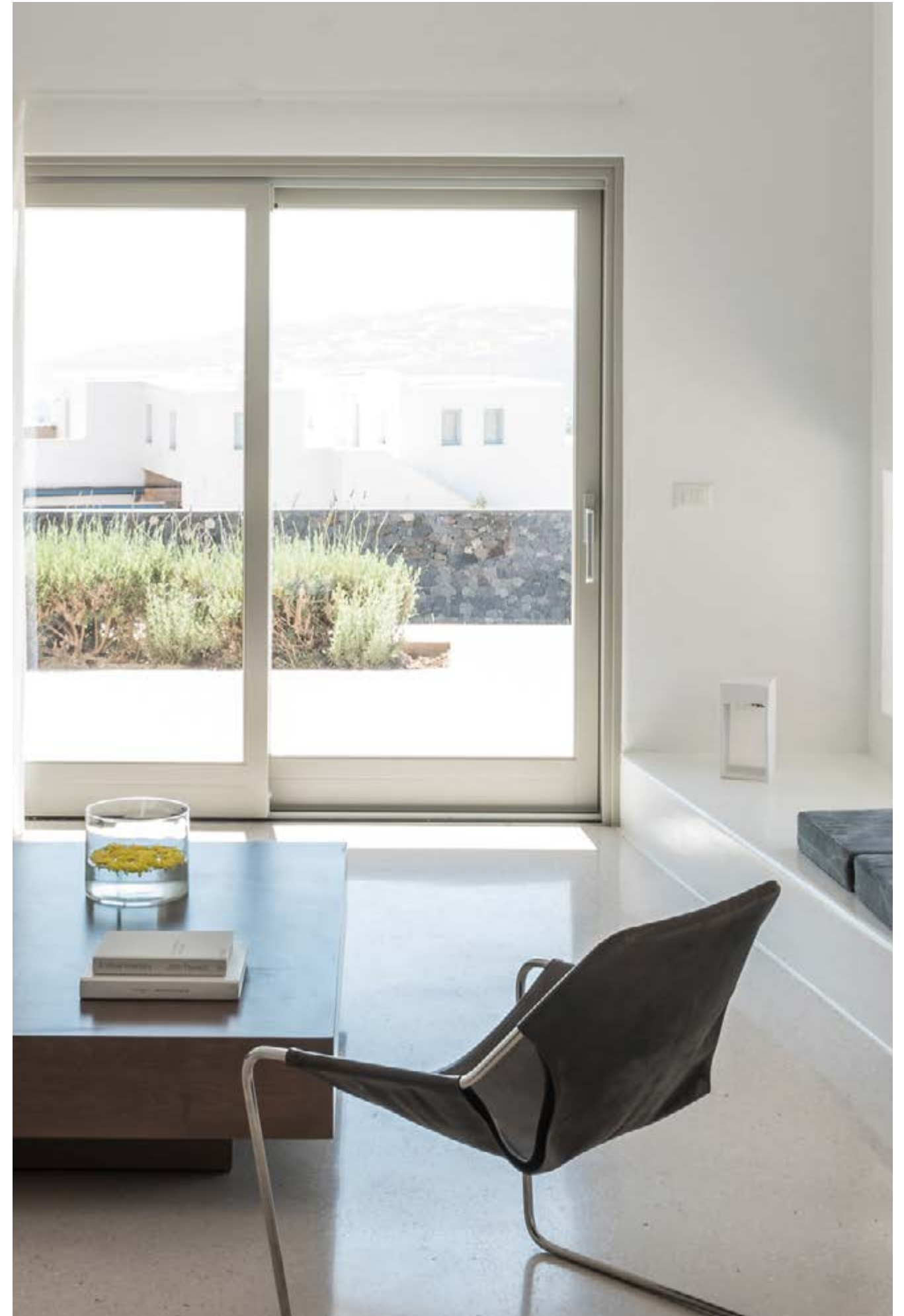
## FLOOR PROTECT

98

Floor protect is a product specially developed for the maintenance and protection of microcement. Water-proofs, revives and protects previously varnished surfaces. Restores light scratches on the floor. Does not contain waxes, so it does not scratch with footsteps and does not disappear in a short period of time. By simply applying and spreading it with a mop, it protects floors for long periods of time.

Consumption: 12 m<sup>2</sup>/L

Volume: 5 L



99



# CEMHER®

- ORIGIN -

**kilnher** group®

C/ Llanterners 44,  
P. Ind. La Figuera 46970  
Alaquas - Valencia (Spain)

+ 34 96 150 50 24      [info@cemher.com](mailto:info@cemher.com)

[www.cemher.com](http://www.cemher.com)